



**Simpolo Vitrified Private Limited**

Old Ghuntu Road, MORBI - 363 642, Gujarat, INDIA  
Tele.: +91 2822 241622, E-mail: [customercare@simpolo.net](mailto:customercare@simpolo.net)

**MUMBAI**

Simpolo Gallery, Unit No.: 203, 2<sup>nd</sup> Floor, Morya Land Mark 2, Link Road, Andheri (W), Mumbai - 400 053.  
Tele.: +91 22 40167131, E-mail: [mumbai@simpolo.net](mailto:mumbai@simpolo.net)

**AHMEDABAD**

First Floor, 103, Sumel - 2, Near Gurudwara, S. G. Highway, Bodakdev, Ahmedabad - 380 054.  
Tele.: +91 79 400 37222, +91 79 400 52220, E-mail: [ahmedabad@simpolo.net](mailto:ahmedabad@simpolo.net)

**DELHI**

H-139, First Floor, Sector-63, Noida - 201 301, Uttar Pradesh.  
Mob.: +91 93103 90046, E-mail: [delhi@simpolo.net](mailto:delhi@simpolo.net)

**COCHIN**

33/2380 A-A1 NH Bypass, Vysali Bus Stop, Chakkaraparambu, Cochin - 682 032.  
Mob.: +91 93493 39938, Fax: +91 4844 037118, E-mail: [cochin@simpolo.net](mailto:cochin@simpolo.net)

**KOLKATA**

Ground Floor, DB - 52, Salt Lake City, Sector 1, Kolkata - 700 064. (W.B.)  
Mob.: +91 90733 53728, E-mail: [kolkata@simpolo.net](mailto:kolkata@simpolo.net)

# SCS Neo Collection

600x1200mm

8.5mm



MADE IN INDIA  
SINCE 1977



**SCS** Neo Collection  
COLLECTION 2020

600x1200mm



### Carving Effect

THE SILENT ACHIEVER

Many achievers celebrate the success and very rare would wait till the next milestone to celebrate. The Carving effect is for the silent achievers, who celebrate without saying it out loud and goes on discovering the path to their success.



### Glue-Art Effect

THE PROFOUND CELEBRATOR

The Glue-Art effect is an application done on the tile surface with glue and granules. With high accuracy, Glue is digitally printed in desired patterns on the tile surface and then granules are pasted on it before it enters the kiln. To some, the final result looks like glass drops and some prefers to call them the dewdrops.

## STRENGTH AND BEAUTY TOGETHER

'Sintered Compact Surface' (SCS) is a result of extensive and innovative research. This wonderful product has all the strength and aesthetics desired from stone, marble, granite, wood, or concrete. SCS is made with high pressure and it is sintered by heating treatment so that it has defect-free minimum waviness. It is far more superior and gives a high definition and colour intensity compare to the traditional PGVT.

our brand  
ambassador  
**Hrithik Roshan**





**Wall**  
Lentigo Dove + HL 1 + Gris  
\_Size : 600x1200mm

**Floor**  
Lentigo Gris  
\_Size : 600x1200mm



Lentigo Dove



Lentigo Bay



Lentigo HL 1



Lentigo HL 2



Lentigo Gris

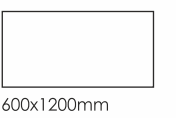


Lentigo Amber



**Glazed Vitrified Tiles**

**THICKNESS** : 8.5mm  
**SURFACE** : Matt





**Wall**

Plexus Bay + HL 2  
\_Size : 600x1200mm

**Floor**

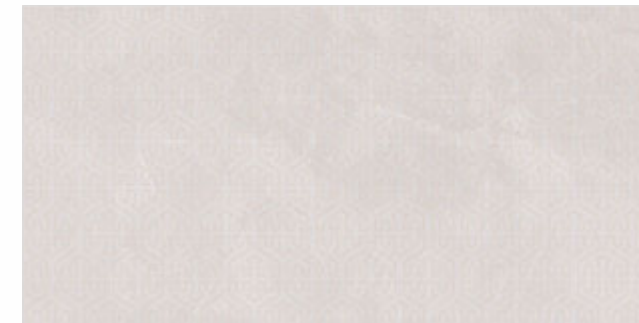
Plexus Amber  
\_Size : 600x1200mm



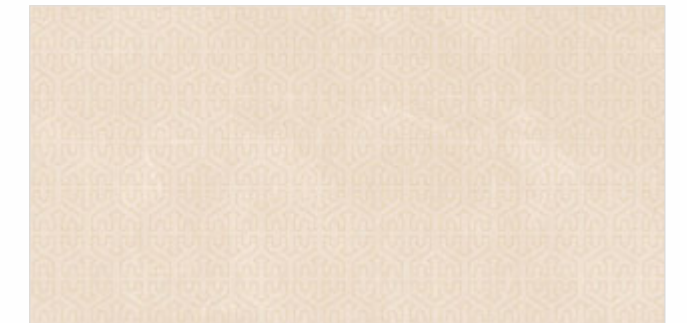
Plexus Dove



Plexus Bay



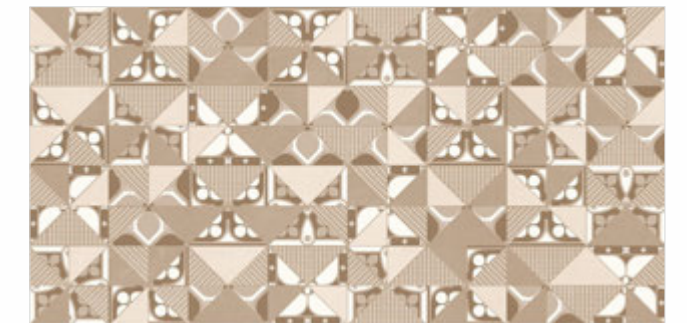
Plexus HL 1



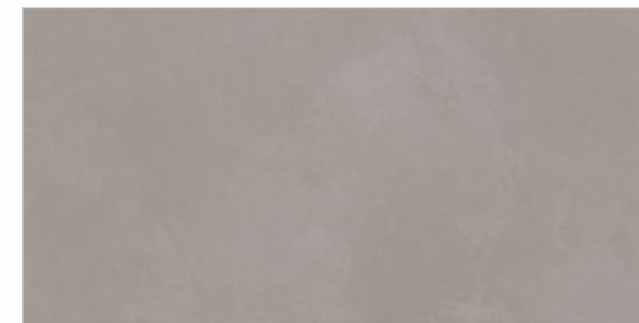
Plexus HL 2



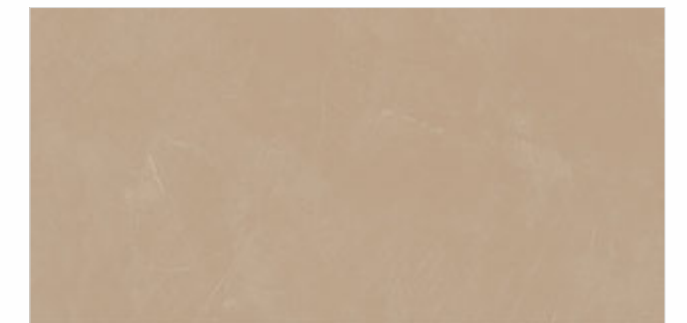
Plexus Decor 1



Plexus Decor 2



Plexus Gris

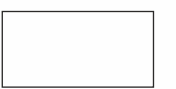


Plexus Amber



**Glazed Vitrified Tiles**

**THICKNESS** : 8.5mm  
**SURFACE** : Matt

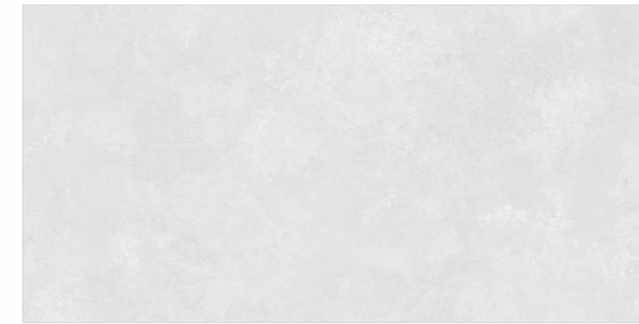


600x1200mm



**Wall**  
Stabile Dove + Decor 1  
\_Size : 600x1200mm

**Floor**  
Stabile Gris  
\_Size : 600x1200mm



Stabile Dove



Stabile Bay



Stabile HL 1



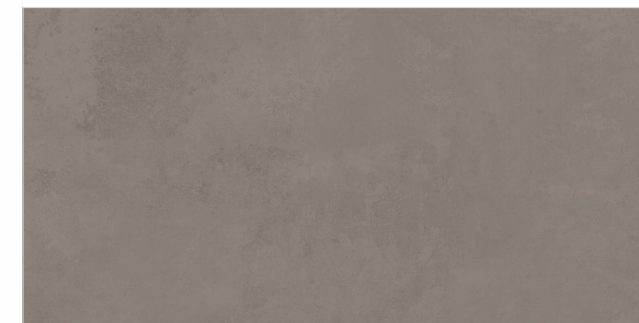
Stabile HL 2



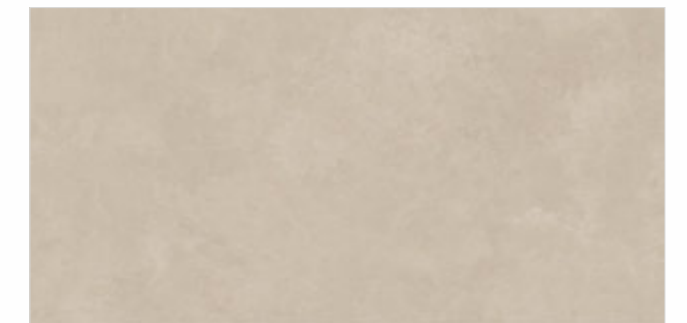
Stabile Decor 1



Stabile Decor 2



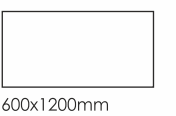
Stabile Gris



Stabile Amber

**Glazed Vitrified Tiles**

**THICKNESS** : 8.5mm  
**SURFACE** : Matt



600x1200mm



**Wall**  
Regrow Amber + Decor  
\_Size : 600x1200mm

**Floor**  
Regrow Amber  
\_Size : 600x1200mm



Regrow Olive



Regrow Bay



Regrow Decor



Regrow Amber

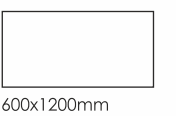


Regrow Hazel



**Glazed Vitrified Tiles**

**THICKNESS** : 8.5mm  
**SURFACE** : Matt



600x1200mm



**Wall**  
Ingot Navy + Decor 1  
\_Size : 600x1200mm

**Floor**  
Ingot Navy  
\_Size : 600x1200mm



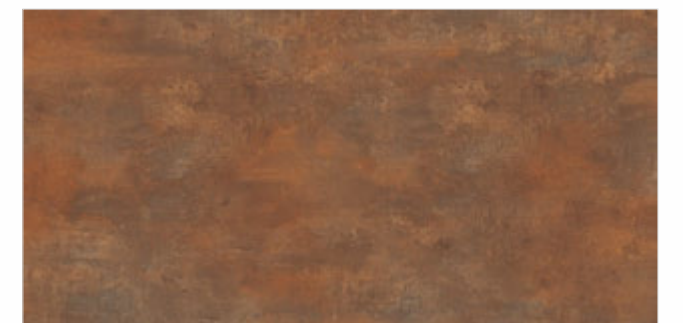
**Glazed Vitrified Tiles**



Ingot Navy



Ingot Decor 1



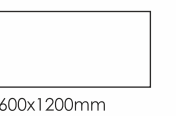
Ingot Rust



Ingot Decor 2



**THICKNESS** : 8.5mm  
**SURFACE** : Matt



600x1200mm



**Wall**

Brickton + Decor  
\_Size : 600x1200mm

**Floor**

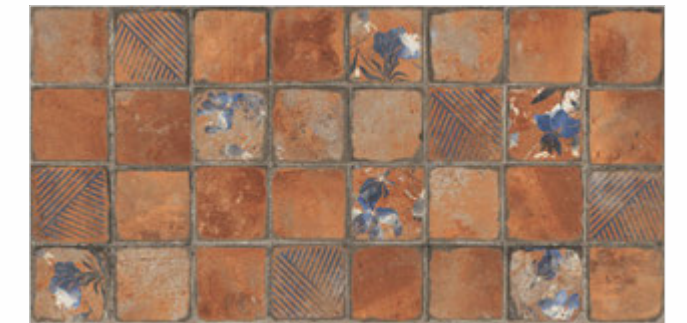
Brickton  
\_Size : 600x1200mm



**Glazed Vitrified Tiles**

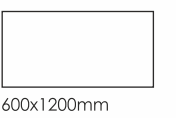


Brickton



Brickton Decor

**THICKNESS** : 8.5mm  
**SURFACE** : Matt





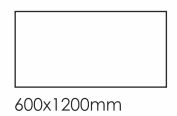


**Wall**  
Perky White + Decor  
\_Size : 600x1200mm

**Floor**  
Perky White  
\_Size : 600x1200mm

**Glazed Vitrified Tiles**

**THICKNESS** : 8.5mm  
**SURFACE** : Matt



600x1200mm



Perky White



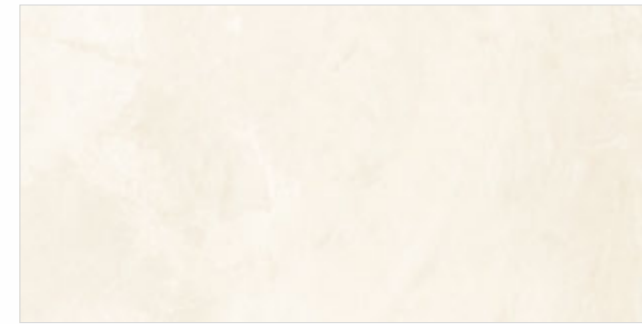
Perky Decor





**Floor**

Pozzolana Crema  
 \_Size : 600x1200mm



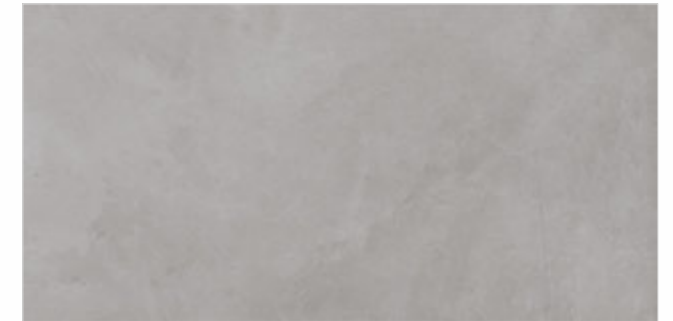
Pozzolana Crema



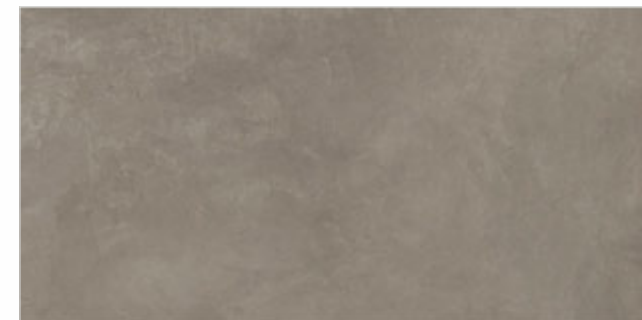
Pozzolana Smoke



Pozzolana Burly



Pozzolana Gris



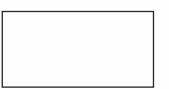
Pozzolana Tobacco



Pozzolana Nero

**Glazed Vitrified Tiles**

**THICKNESS** : 8.5mm  
**SURFACE** : Matt



600x1200mm



**Facade**  
Sandstone Ivory + Brown  
\_Size : 600x1200mm

**Glazed Vitrified Tiles**

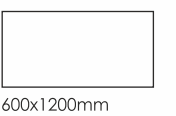


**Sandstone Ivory**



**Sandstone Brown**

**THICKNESS : 8.5mm**  
**SURFACE : Matt**





**Wall**

Antolia Bianco  
\_Size : 600x1200mm

**Floor**

Antolia Grey  
\_Size : 600x1200mm



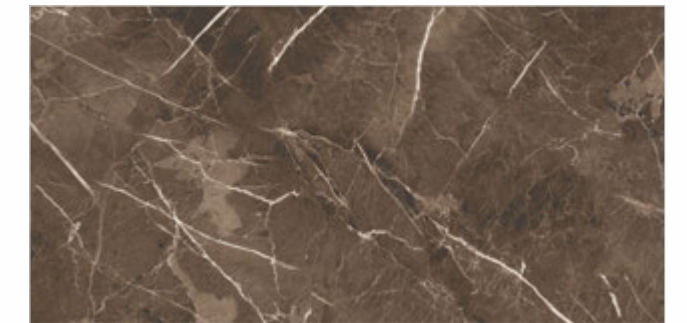
Antolia Bianco



Antolia Crema



Antolia Grey



Antolia Coffee



Antolia Nero

**Glazed Vitrified Tiles**

**THICKNESS** : 8.5mm  
**SURFACE** : High Glossy,



600x1200mm

# Stain Test

AS PER ISO 13006:2018 Gr. Bla			R VALUE RAMP TEST
PRODUCT NAME	CATEGORY	CLASS	CLASS**
SCS	GLOSSY	CLASS-5	NO CLASS
SCS	SATIN MATT	CLASS-3	R 9
GVT	MATT	CLASS-4	NO CLASS
PGVT	GLOSSY	CLASS-4	NO CLASS
DRY GRANULA	GLOSSY	CLASS-5	NO CLASS
DRY GRANULA	SATIN MATT	CLASS-4	R 9
SSS	SATIN MATT	CLASS-4	NO CLASS
SSS	GLOSSY	CLASS-3	NO CLASS
COPOS / GRANOS	POLISH	CLASS-3	NO CLASS
COPOS / GRANOS	MATT	CLASS-4	R 9
ROCK DECK	R9	CLASS-4	R 9
ROCK DECK	R10	CLASS-3	R 10
ROCK DECK	R11	CLASS-3	R 11
<b>Class-5 Cleaning Agent:</b>	Water / Hot Water		
<b>Class-4 Cleaning Agent:</b>	Colin/Thinner/Weak cleaning agent (a commercial agent), not containing abrasive, with a pH of 6,5 to 7,5.		
<b>Class-3 Cleaning Agent:</b>	Red Harpic/Strong cleaning agent (a commercial cleaning agent), containing abrasive, with a pH of 9 to 10.		

\* Immediate cleaning action is the best way

\* chemicals reference are for first suggestion for any details contact company personnel

# do not use these chemicals without considering expert suggestions

\*\* The group classification give the parameter for determine the sliding resistance: the group R 9 is less anti-slip, the group R 13 as the maximum effectiveness anti-slipA

## TECHNICAL SPECIFICATION



CHARACTERISTIC	STANDARD AS PER ISO13006:2018/ EN14411 Gr.Bla	STANDARD AS PER IS 15622:2017 Gr.Bla	METHOD OF TESTING	MEAN VALUE OF SIMPOLO
<b>Regulatory Properties</b>				
Deviation in Length and Width	±0.30 % (±1.00 mm)	±0.10 %	ISO 10545-2/ IS 13630-1	± 0.10 %
Deviation in Thickness	±5.0 % (± 0.50 mm)	±5.0 %	ISO 10545-2/IS 13630-1	± 4.0 %
Straightness in Side	±0.30 % (± 0.80 mm)	±0.10 %	ISO 10545-2/IS 13630-1	± 0.10 %
Rectangularity	±0.30 % (±1.50 mm)	±0.10%	ISO 10545-2/IS 13630-1	± 0.10 %
Surface Flatness Central Curvature	±0.40 % ( ± 1.80 mm)	±0.50 %	ISO 10545-2/IS 13630-1	± 0.20 %
Surface Flatness Edge Curvature	±0.40 % ( ± 1.80 mm)	±0.50 %	ISO 10545-2/IS 13630-1	± 0.20 %
Surface Flatness Warpage	±0.40 % ( ± 1.80 mm)	±0.50 %	ISO 10545-2/IS 13630-1	± 0.10 %
Surface Quality	>95% defects free	>95% defects free	ISO 10545-2/IS 13630-1	>95% defects free
Small Color Difference (For Plain Colour)	ΔE <1.00	N.A.	ISO 10545-16	ΔE <0.80
Glossiness ( Polished)	As per Manufacturer	As per Manufacturer	Gloss Meter 60°	≥ 90
Glossiness (Satin/Posh)	As per Manufacturer	As per Manufacturer	Gloss Meter 60°	15 ≤ Gloss Value ≤ 25
Glossiness (Matt)	As per Manufacturer	As per Manufacturer	Gloss Meter 60°	7 ≤ Gloss Value ≤14
Glossiness (R Value)##	As per Manufacturer	As per Manufacturer	Gloss Meter 60°	≤ 7
<b>Structural Properties</b>				
Water Absorption	≤0.50 %	≤0.080 %	ISO 10545-3/IS 13630-2	≤0.080 %
Bulk Density	As per Manufacturer	Min 2.20 g/cc	ISO 10545-3/IS 13630-2	> 2.28 gm/cc
<b>Massive Mechanical Properties</b>				
Modulus of Rupture	Min. 35.0 N/mm <sup>2</sup>	Min. 35.0 N/mm <sup>2</sup>	ISO 10545-4/IS 13630-6	Min. 37.0 N/mm <sup>2</sup>
Breaking Strength Thickness ≥7.5 mm(9mm,10 mm)	Min 1300.0 N	Min 1300.0 N	ISO 10545-4/IS 13630-6	Min 1500.0 N
<b>Surface Mechanical Properties</b>				
MOH'S Hardness #	As per Manufacturer	Min. 5	BS EN 15771/IS 13630-13	Polished Min 4**/Satin, Posh & Matt Min 6
Surface Abrasion Resistance #	As per Manufacturer	Min. Class II	ISO 10545-7/IS 13630-11	Polished Min II**/Satin, Posh & Matt Min III
<b>Thermal Hygrometric Properties</b>				
Moisture Expansion	Max 0.06% (0.6 mm/m)	Max 0.02 mm/m	ISO 10545-10/IS 13630-3	Max 0.02 mm/m
Thermal Expansion(COE) at 100°C	As per Manufacturer	Max. 6.0 x 10 <sup>-6</sup>	ISO 10545-8/IS 13630-4	Max. 6.0 x 10 <sup>-6</sup>
Thermal Shock Resistance	Min 10 Cycle	Min 10 Cycle	ISO 10545-9/IS 13630-5	Min 10 Cycle
Impact Resistance(COR) #	Min. 0.55	Min 0.55	ISO 10545-5/IS 13630-14	Min 0.55
Frost Resistance	As per Manufacturer	As per Manufacturer	ISO 10545-12/IS 13630-10	Frost Proof
<b>Chemical Properties</b>				
Resistance to Staining Glazed	Min. Class 3	Min Class 1	ISO 10545-14/IS 13630-8	Min. Class 4/Min. Class 1
Resistance to Household Chemicals & Swimming Pool Salts Glazed	Min Class GB	Min Class AA	ISO 10545-13/IS 13630-8	Min Class GB/Min Class AA
Resistance to Low Concentrate Acid and Alkalis Glazed	As per Manufacturer	As per Manufacturer	ISO-10545-13/IS 13630-8	Min Class GLB***/ Min Class A***
Resistance to High Concentrate Acid and Alkalis Glazed	As per Manufacturer	As per Manufacturer	ISO-10545-13/IS 13630-7	Min Class GHB***/ Min Class A***
<b>Safety Properties</b>				
Skid Resistance -(DCOF-WET PENDULUM)##	As per Manufacturer	As per Manufacturer	BS 7976-2	Glossy ≥P0, Satin, Posh ≥P1 Matt ≥P2
Slip Resistance -Satin/ Matt (DCOF- R Value )##	As per Manufacturer	As per Manufacturer	DIN 51130	R9 to R13
Lead and Cadmium release	As per Manufacturer	N.A.	ISO-10545-15	Does not yield Pb &Cd

\* Whichever is Lower

\*\* With nano technology (Polished Vitrified tiles) Depending on Application area (low or high intensity of traffic)

\*\*\* Except Hydrofluoric Acid & it's compound

# Tiles Intended for use on floor

## For Floor tiles,as per customer requirement

## PACKING DETAILS

PRODUCT	SIZE	ACTULE SIZE	THICKNESS	TILES / BOX	COVERAGE AREA / BOX
SCS	600x1200mm / 60x120cm		8.5mm	3 pcs.	2.16 sq. mtr. 23.25 sq. ft.

