

# STONE

collection  
2023/24

# BOFFO®

— ADORABLE SURFACES —

# TABLES

memories of nature  
in **human live**



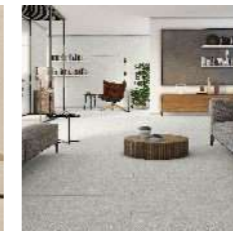
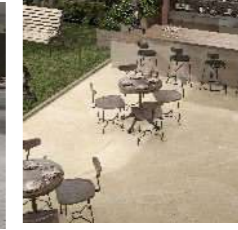


# welcoming

The joy that beautiful things bring, by making our homes more welcoming and improving our lives.



# essences




collection  
2023/24



# STONECRAFT

collection





# high performance architectural design



**We strive to improve in each new project by creating spaces with emotion and character.**

Boffo is committed to detail at every level, which is why we offer you different ways of experiencing the brand – the latest one online! We've also given a lot of thought about how to enhance the sales experience with your customers.



# the most valuable resource deserves respect

**800x1600mm**  
carving + matt surface

---

We get closer to supply sources, promoting national and European options. We encourage reuse and recycling. Defending the planet means looking ahead, ensuring also the future of our industry

Natural resources are a gift of which humanity must show himself worthy, taking care of them. To slow down unique and finite resources exploitation, we turn our commitment to a growing use of materials renewable and responsible.



# introduction punch

In Boffo, ceramic makes colour tangible, creating a surface on which tactile and visual sensations are permanently contaminated. From every combination of colours and materials comes something new and surprising, theatre of always different emotions.







cotta  
punch



give your  
space a  
personalized touch





**torano  
bianco**



800x1600mm | Carving + Punch Surface | 04 Random

# torano bianco

**STONECRAFT**  
collection



Touch for Virtual  
**360°**







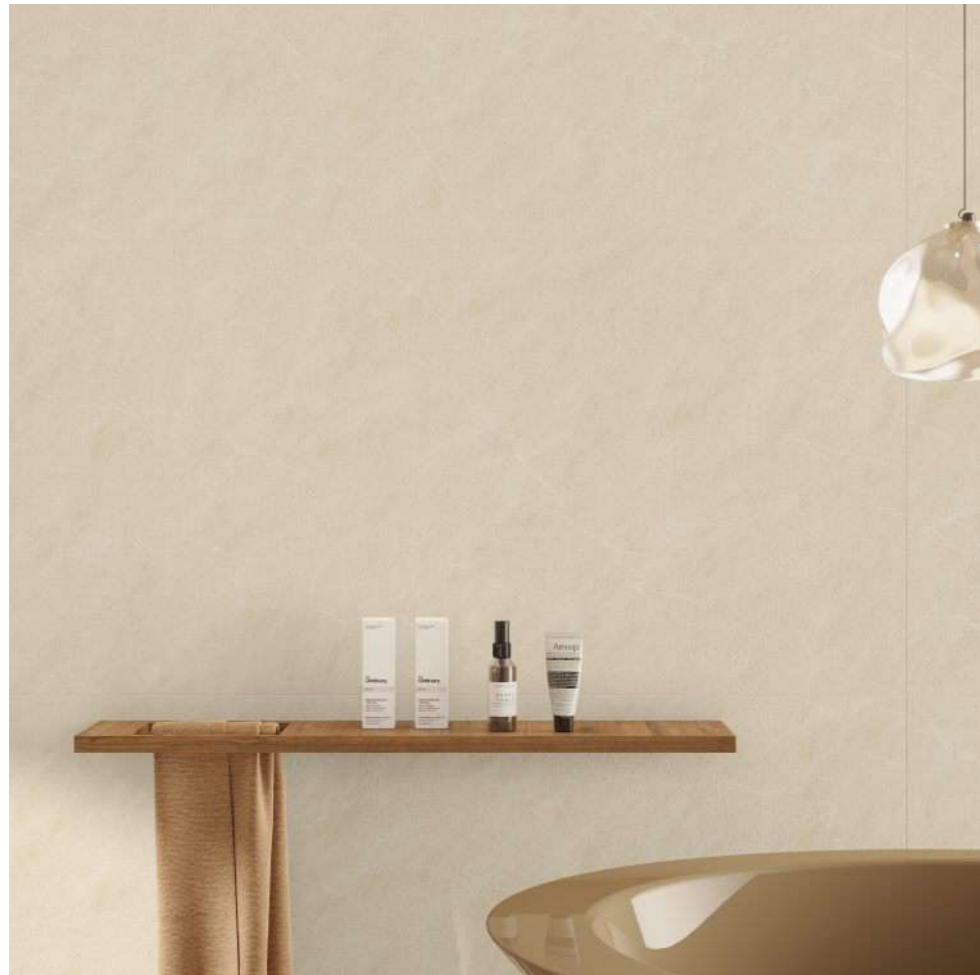
**tectonic  
almond**



800x1600mm | Carving + Punch **Surface** | **04** Random

# tectonic almond

**STONECRAFT**  
collection



Touch for Virtual  
**360°**







**tectonic  
sand**



800x1600mm | Carving + Punch **Surface** | **04** Random

# tectonic sand

**STONECRAFT**  
collection



Touch for Virtual







**tectonic  
grey**



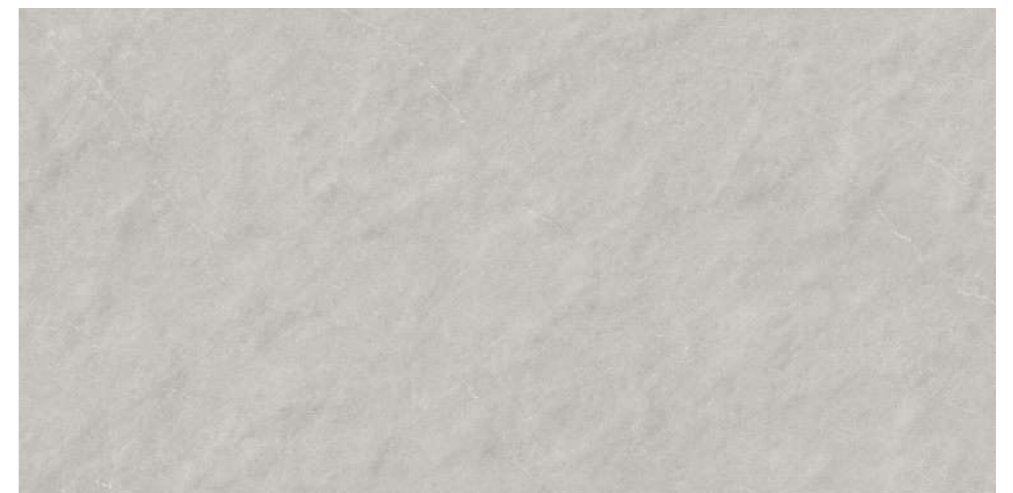
800x1600mm | Carving + Punch **Surface** | **04** Random

# tectonic grey

**STONECRAFT**  
collection



Touch for Virtual  
**360°**







**tectonic  
gris**



800x1600mm | Carving + Punch Surface | 04 Random

# tectonic gris

**STONECRAFT**  
collection



Touch for Virtual  
**360°**







**matrium  
peach**



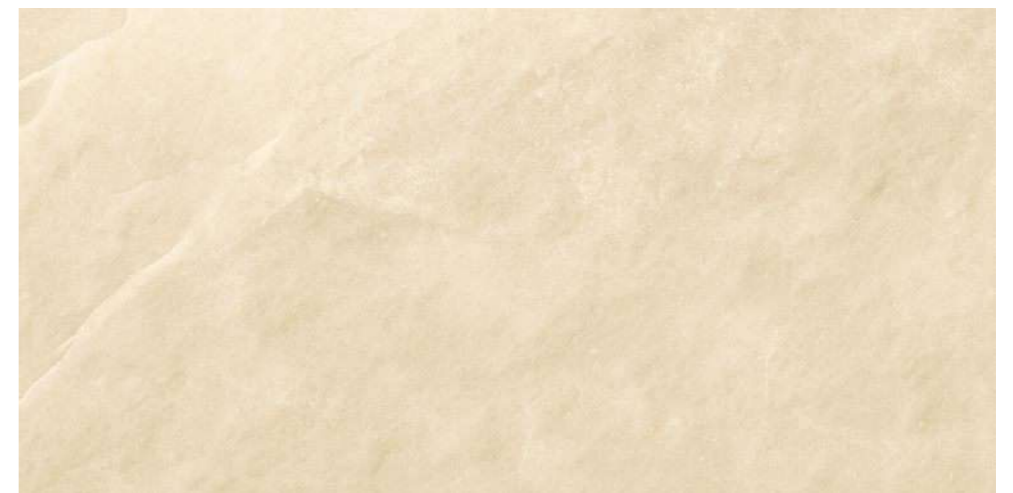
800x1600mm | Carving + Punch **Surface** | **04** Random

# matrium peach

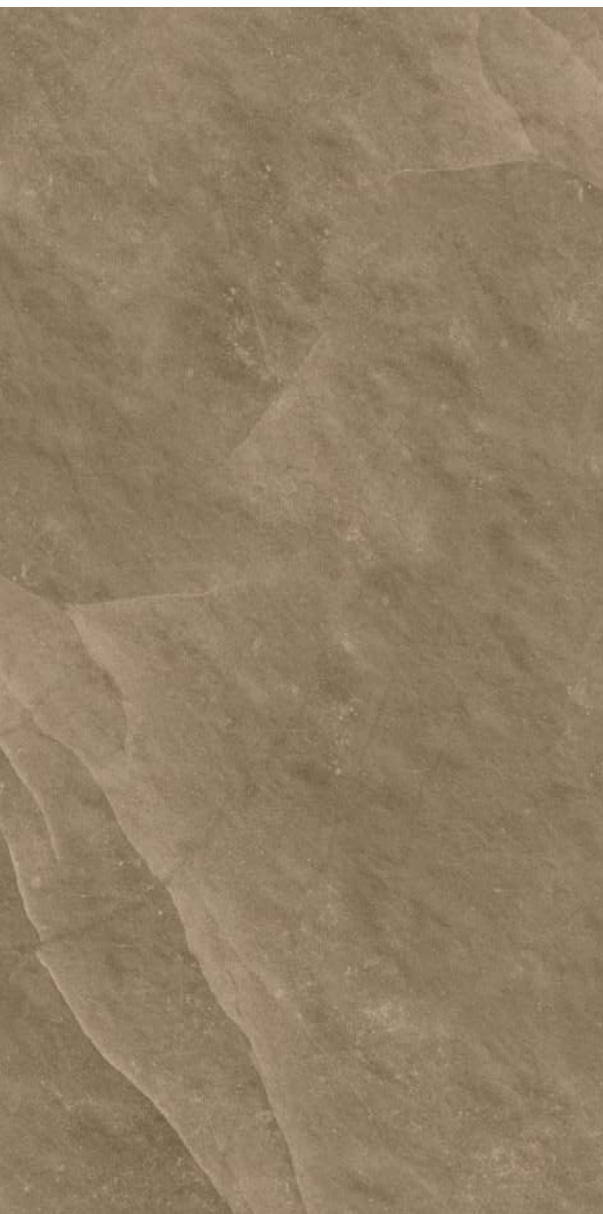
**STONECRAFT**  
collection



Touch for Virtual  
**360°**







**matrium  
caramel**



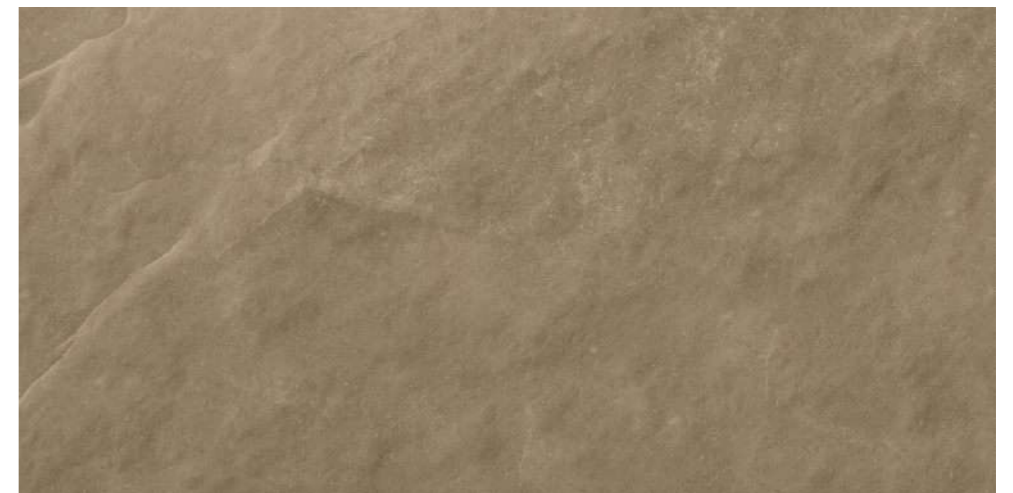
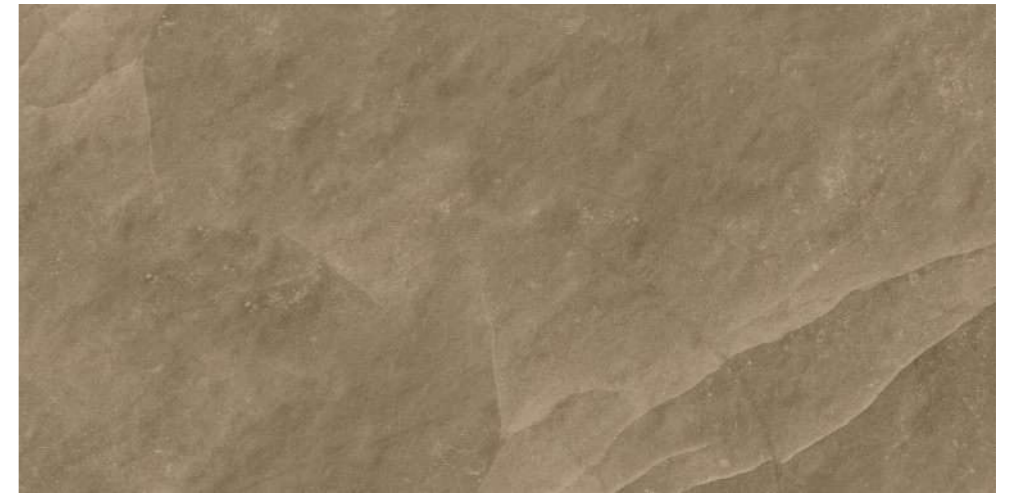
800x1600mm | Carving + Punch Surface | 04 Random

# matrium caramel

**STONECRAFT**  
collection



Touch for Virtual  
**360°**







**matrium  
nacar**



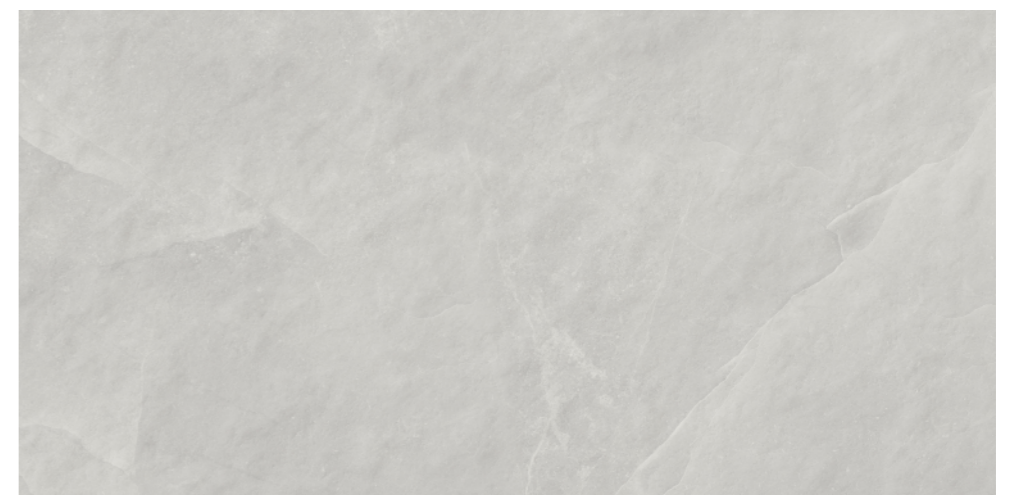
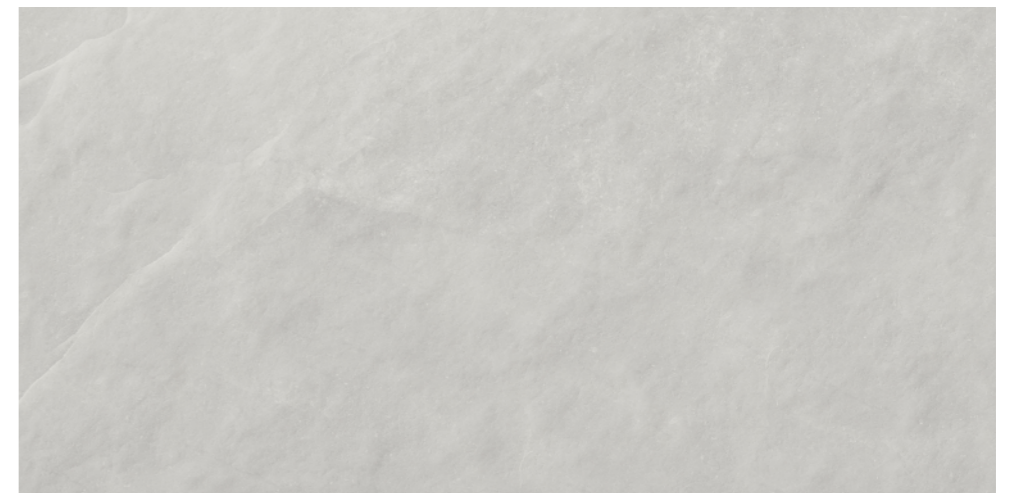
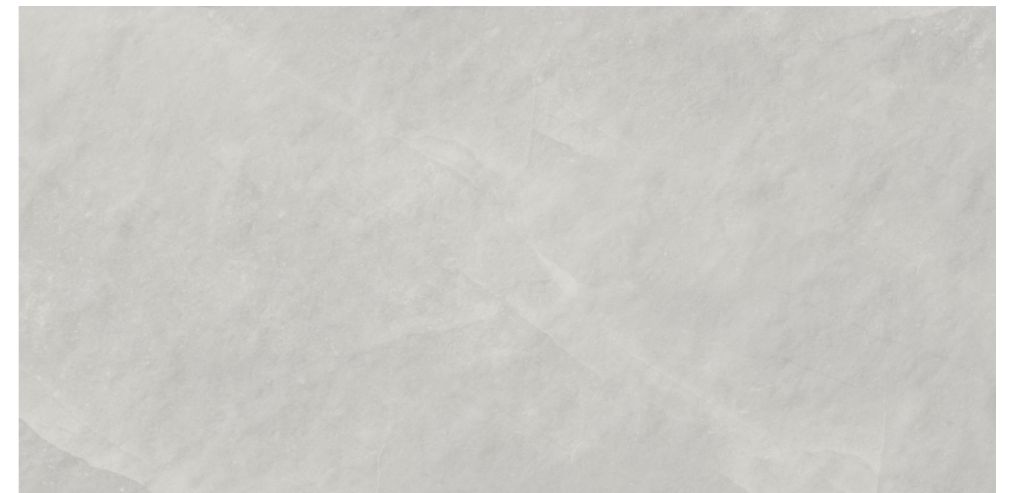
800x1600mm | Carving + Punch Surface | 04 Random

# matrium **nacar**

**STONECRAFT**  
collection



Touch for Virtual  
**360°**







**matrium  
slate**



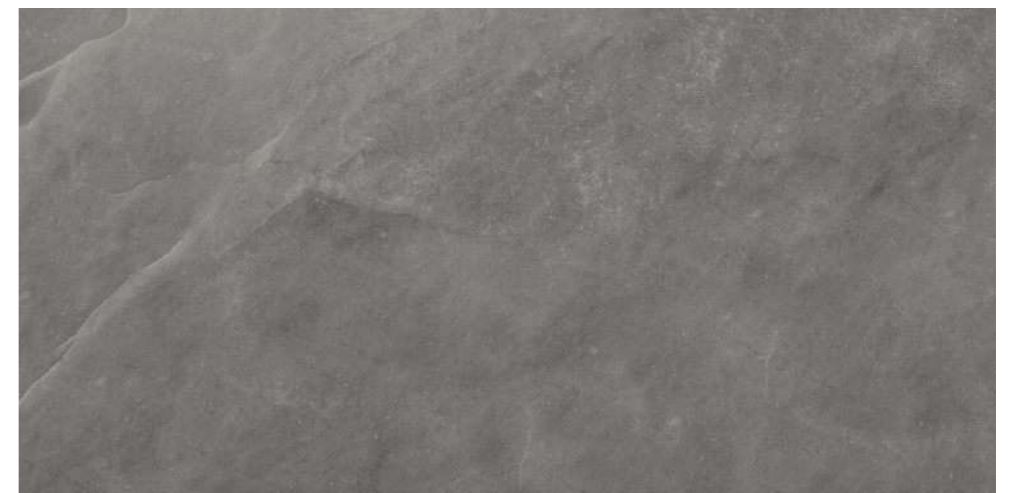
800x1600mm | Carving + Punch Surface | 04 Random

# matrium slate

**STONECRAFT**  
collection



Touch for Virtual







**matrium  
blu**



800x1600mm | Carving + Punch Surface | 04 Random

# matrium **blu**

**STONECRAFT**  
collection



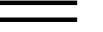
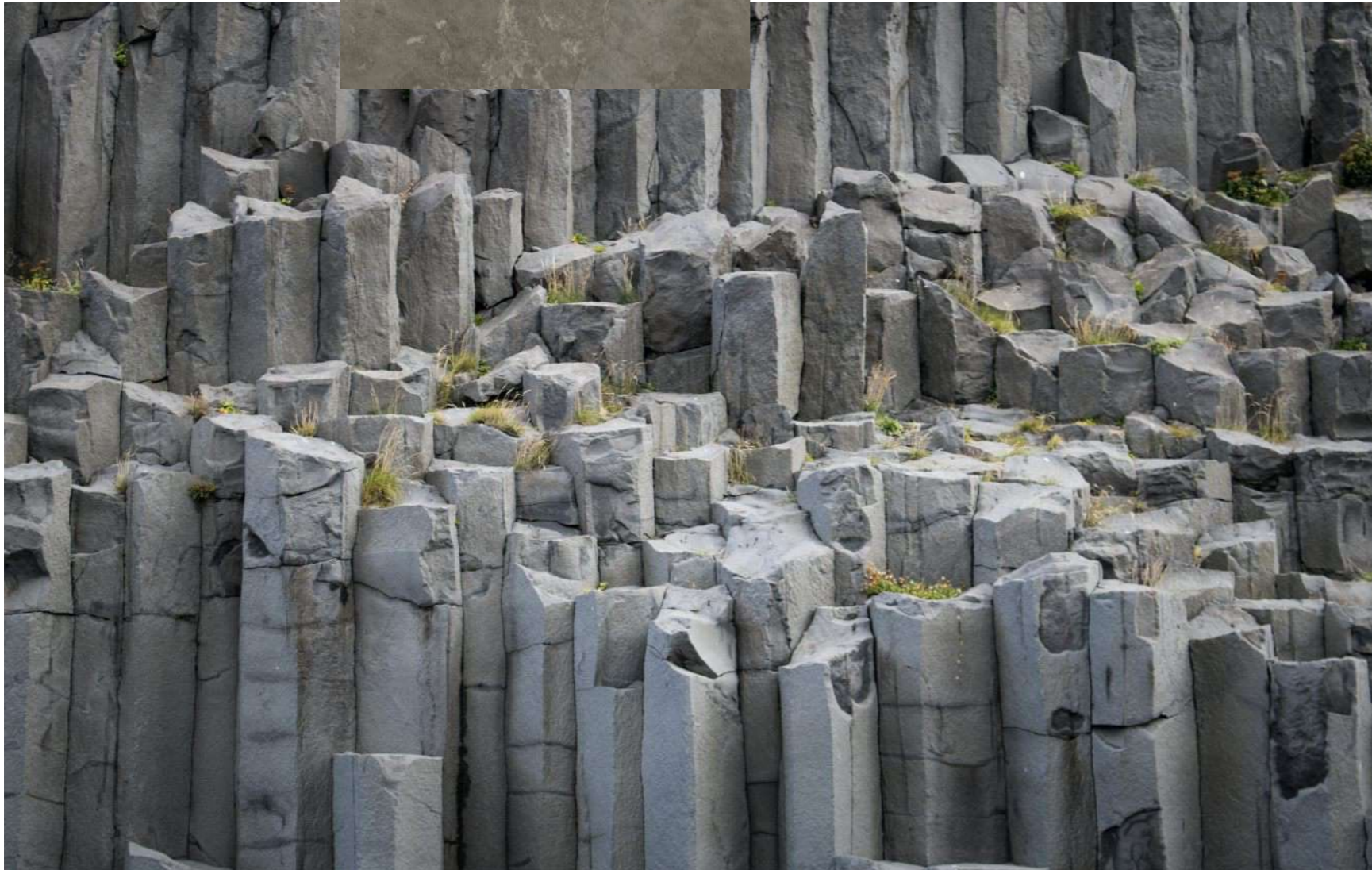
Touch for Virtual  
**360°**







lopato+  
cotta  
punch



We design living  
consider  
the **environment**





**iceland  
cielo**



800x1600mm | Carving + Punch Surface | 04 Random

# iceland **cielo**

**STONECRAFT**  
collection



Touch for Virtual  
**360°**







**iceland  
aqua**



800x1600mm | Carving + Punch Surface | 04 Random

# iceland aqua

**STONECRAFT**  
collection



Touch for Virtual  
**360°**







**cotta  
silver**



800x1600mm | Carving + Punch Surface | 04 Random

# cotta silver

**STONECRAFT**  
collection



Touch for Virtual  
**360°**







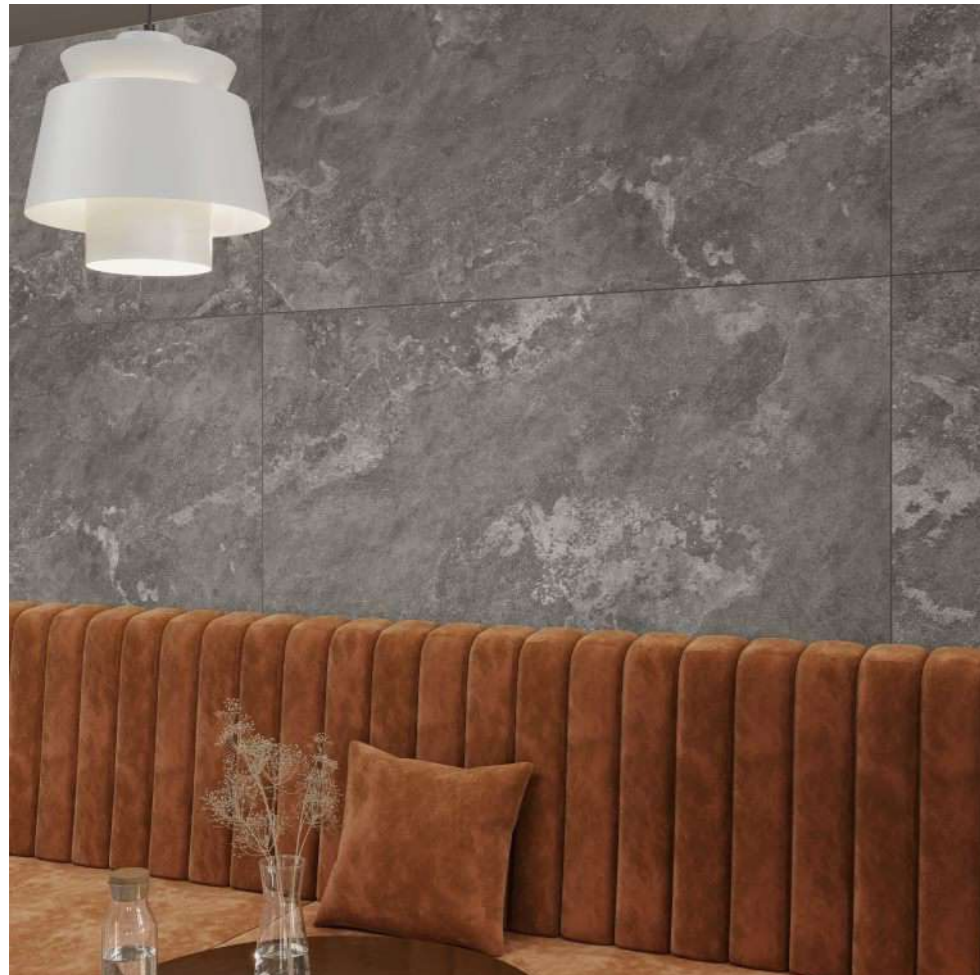
**cotta  
grafito**



800x1600mm | Carving + Punch Surface | 04 Random

# cotta grafito

**STONECRAFT**  
collection



Touch for Virtual  
**360°**







**cotta  
verde**



800x1600mm | Carving + Punch Surface | 04 Random

# cotta verde

**STONECRAFT**  
collection



Touch for Virtual  
**360°**







linear  
punch



transform your  
room into a  
**trendy space**



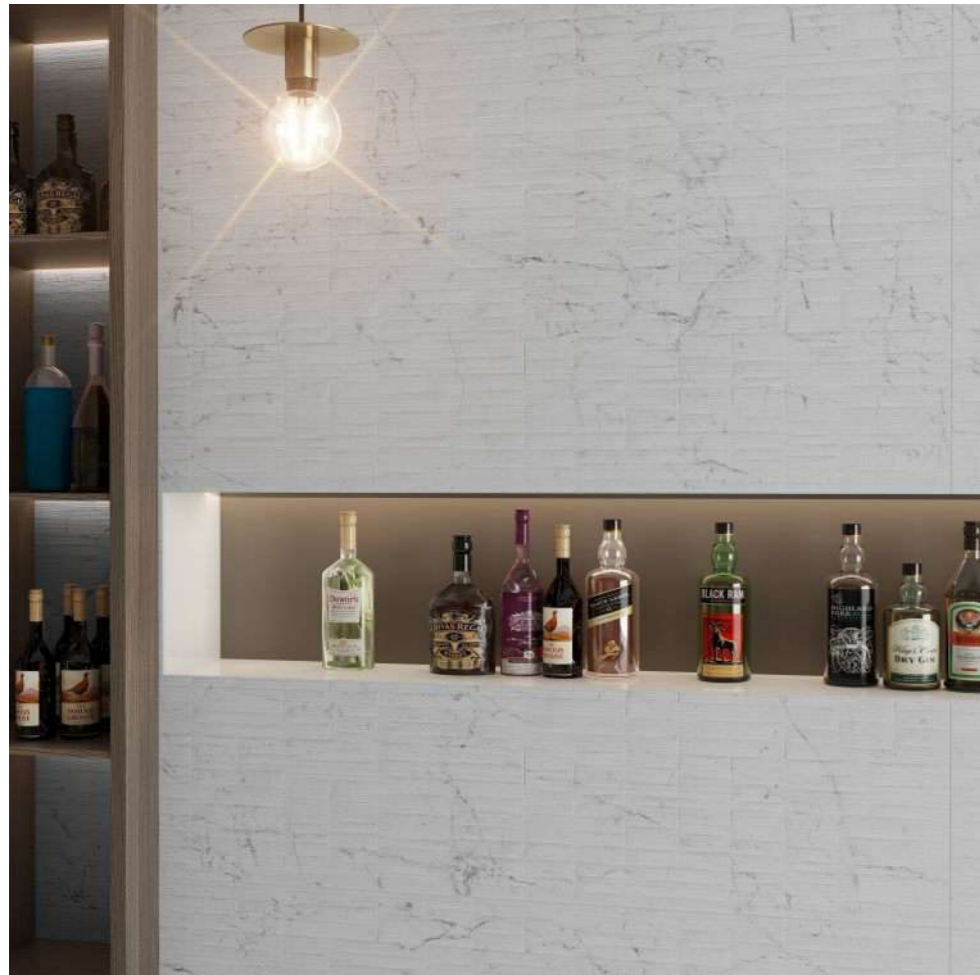


**rock  
apuano  
extra**



800x1600mm | Carving + Punch Surface | 06 Random

# rock apuano extra



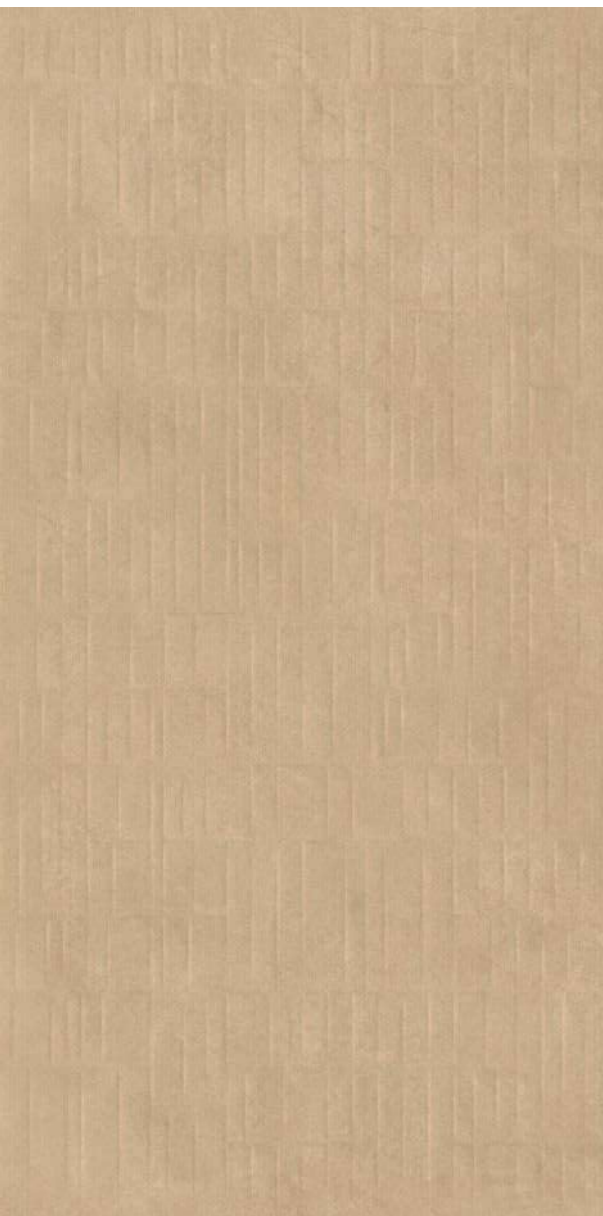
**STONECRAFT**  
collection

Touch for Virtual  
**360°**



Deco apuano extra





**cassero  
almond**



800x1600mm | Carving + Punch Surface | 04 Random

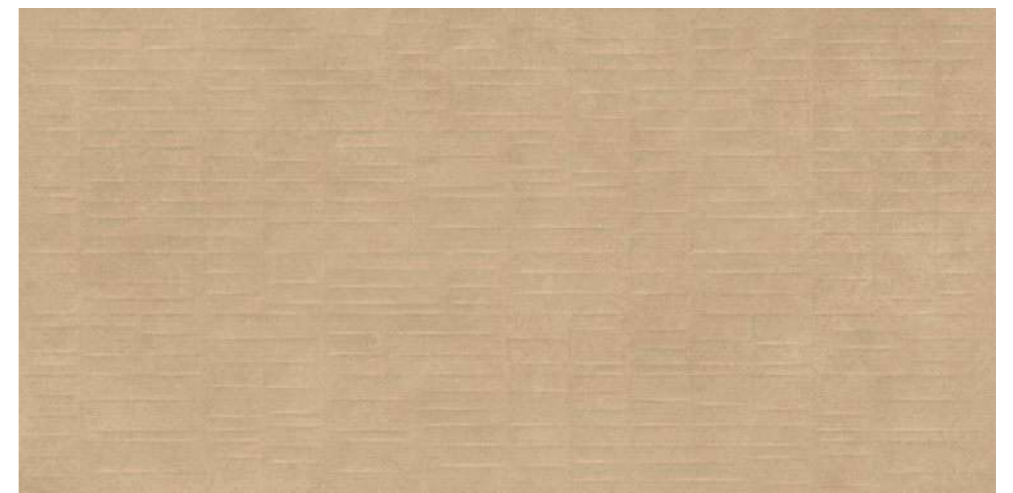
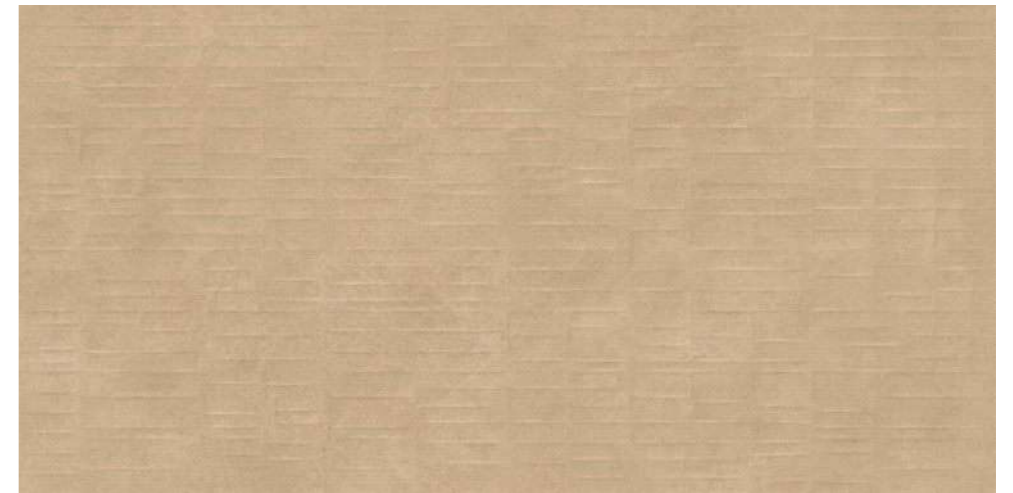
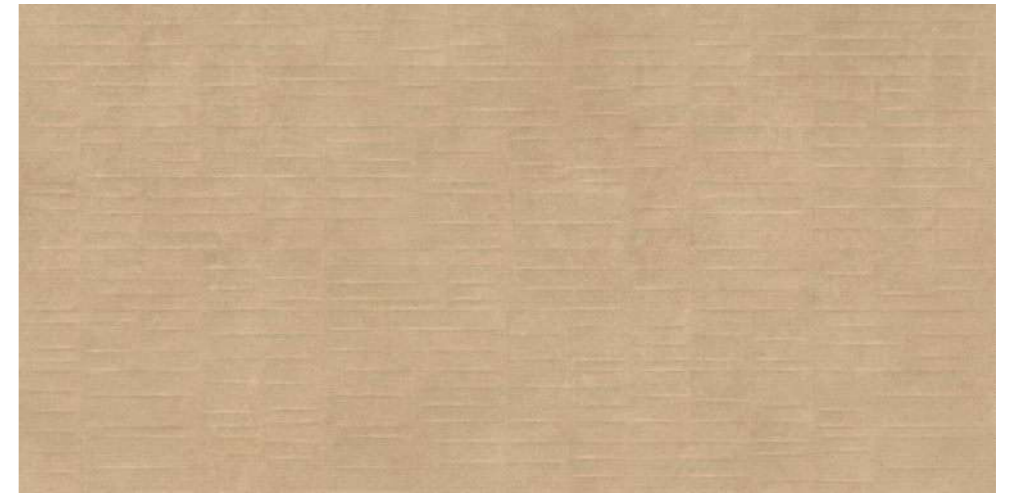
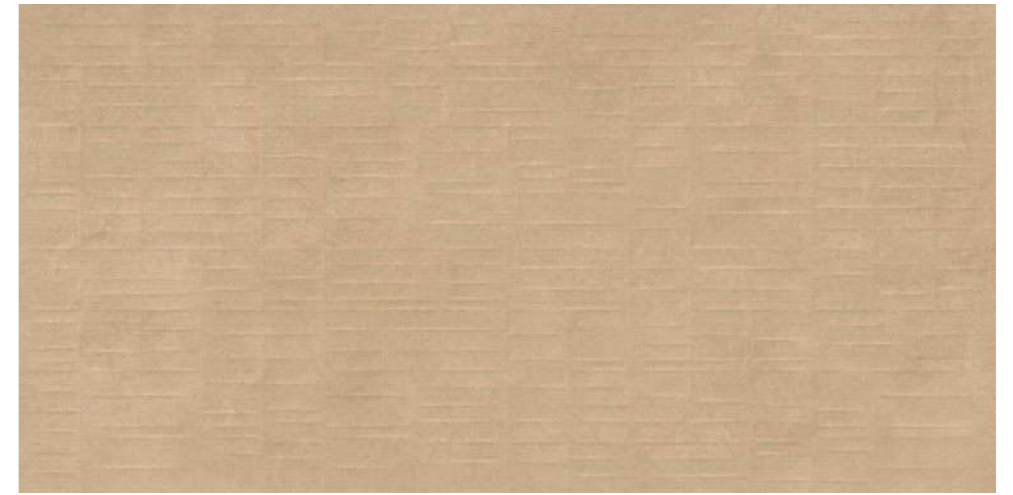
# cassero almond



**STONECRAFT**  
collection

Touch for Virtual  
**360°**

Deco cassero almond







**cassero**  
**amber**



800x1600mm | Carving + Punch Surface | 04 Random

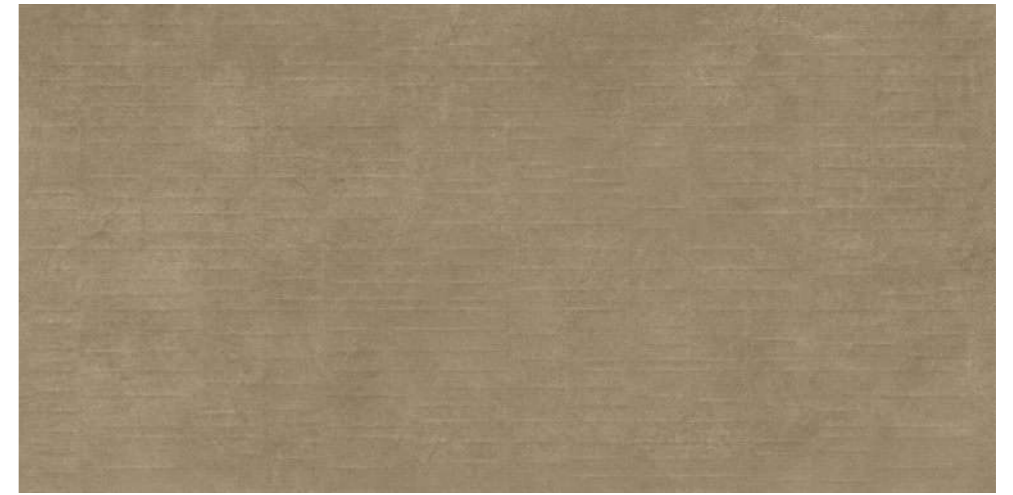
# cassero **amber**



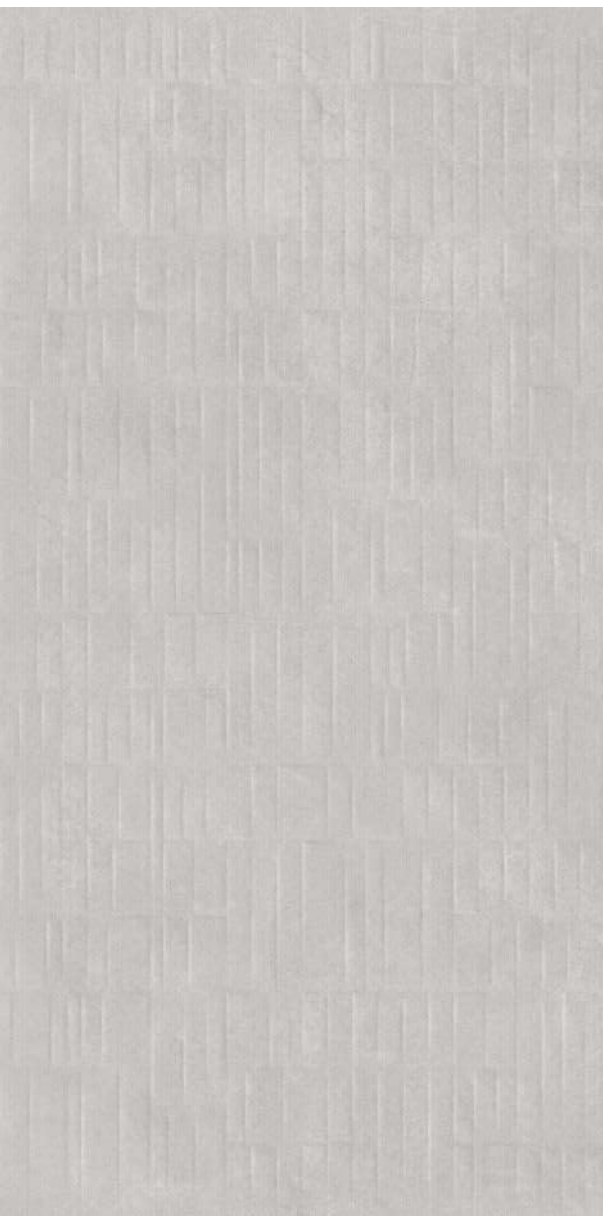
**STONECRAFT**  
collection

Touch for Virtual  
**360°**

Deco cassero amber







**cassero  
blanc**



800x1600mm | Carving + Punch Surface | 04 Random

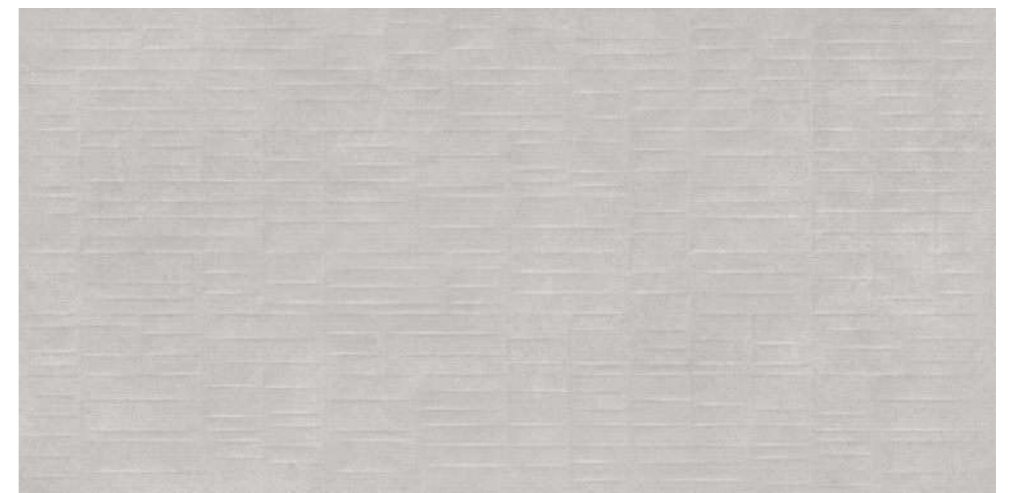
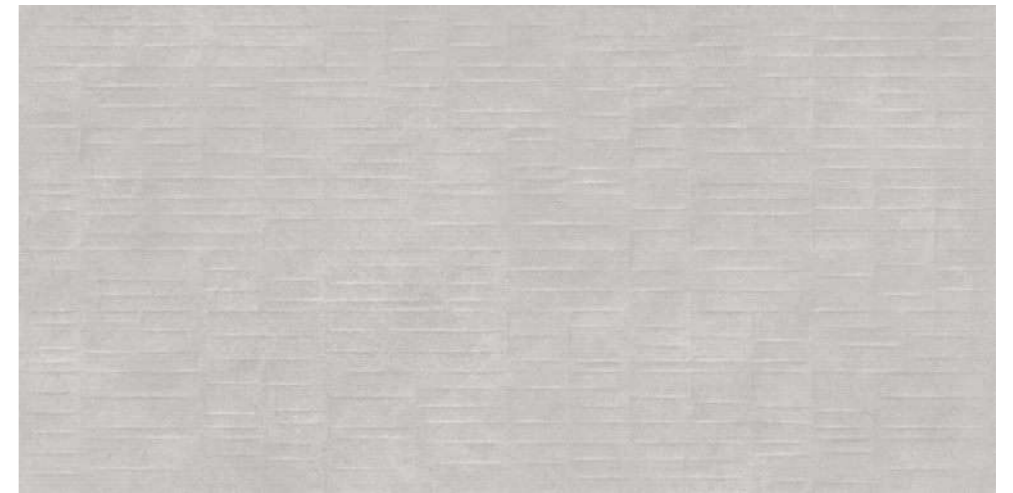
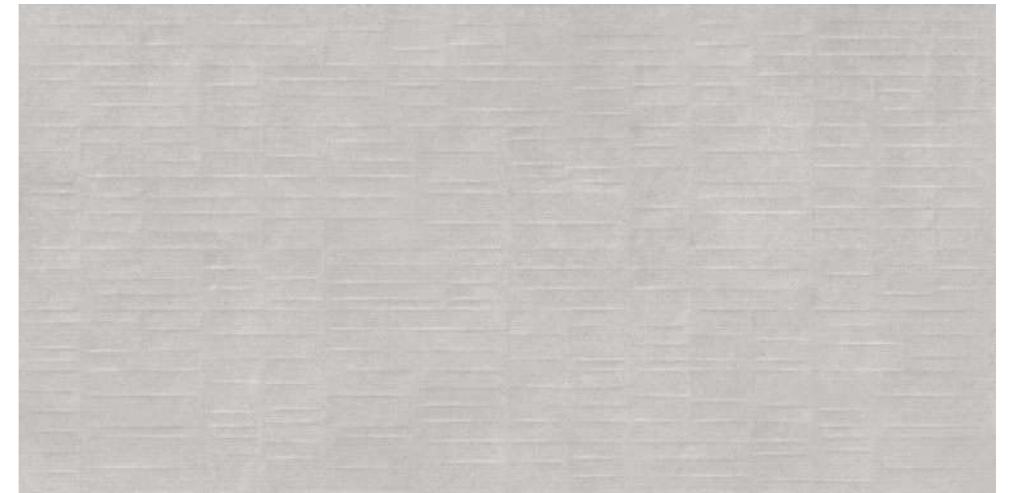
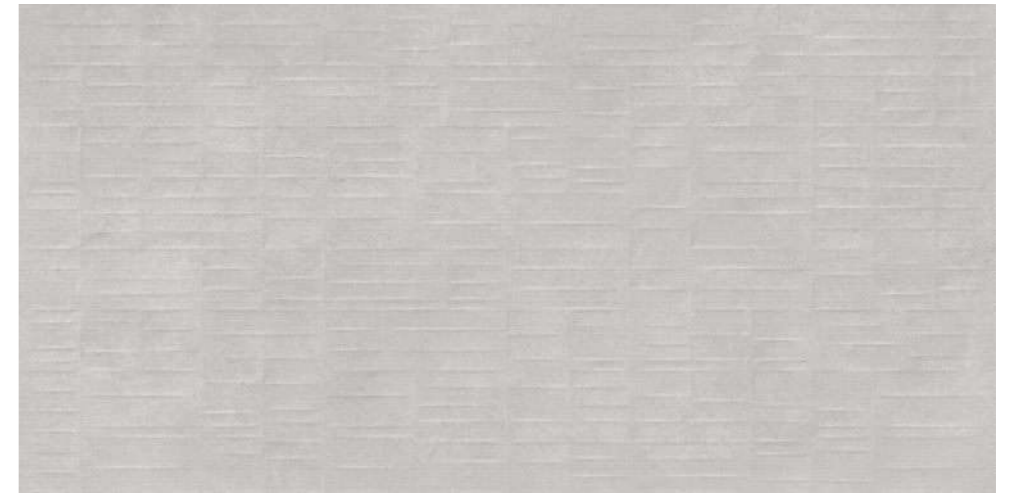
# cassero **blanc**



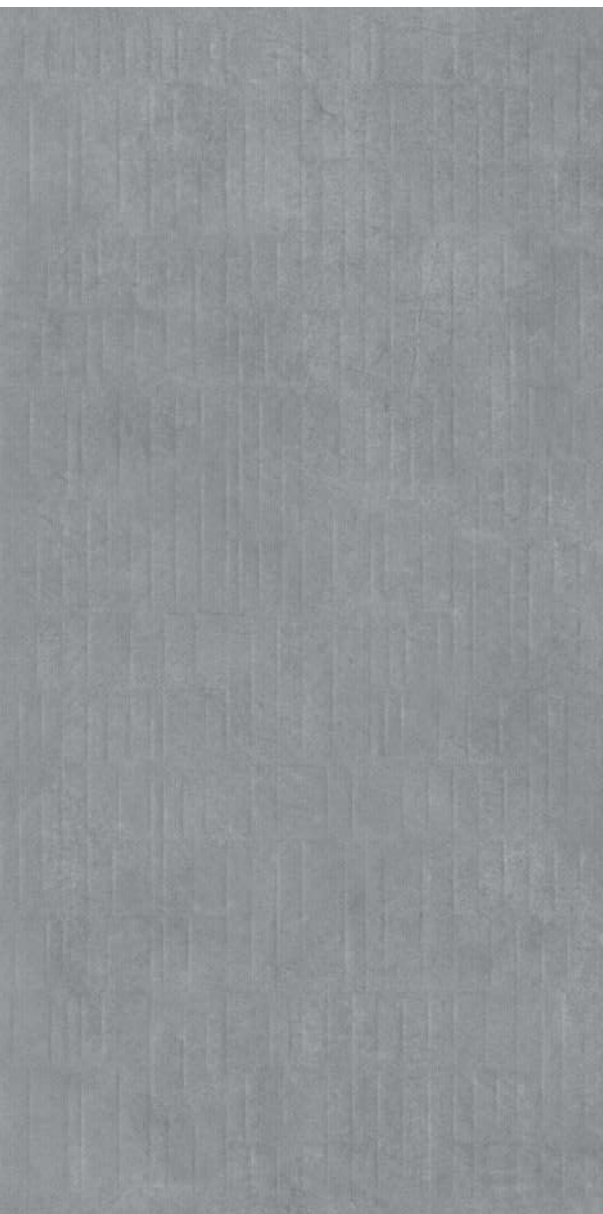
**STONECRAFT**  
collection

Touch for Virtual  
**360°**

Deco cassero blanc







**cassero  
pewter**



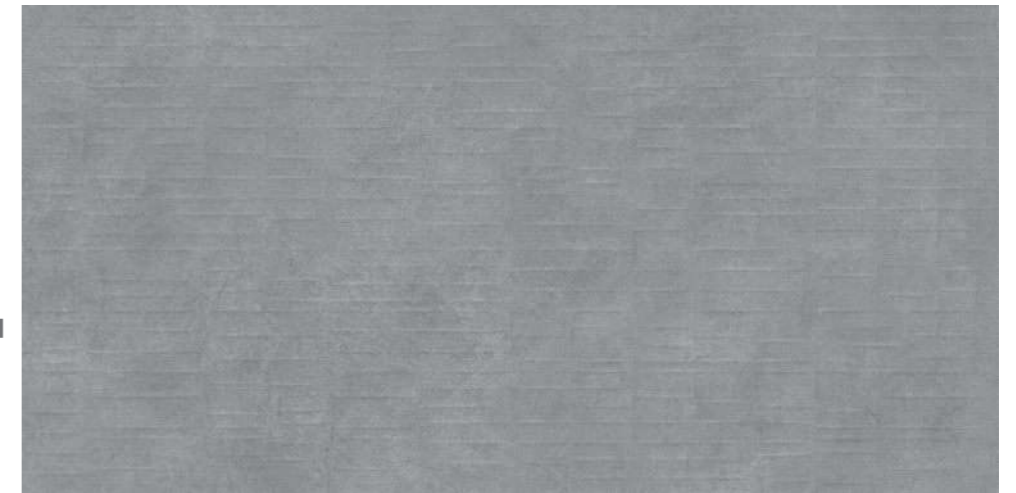
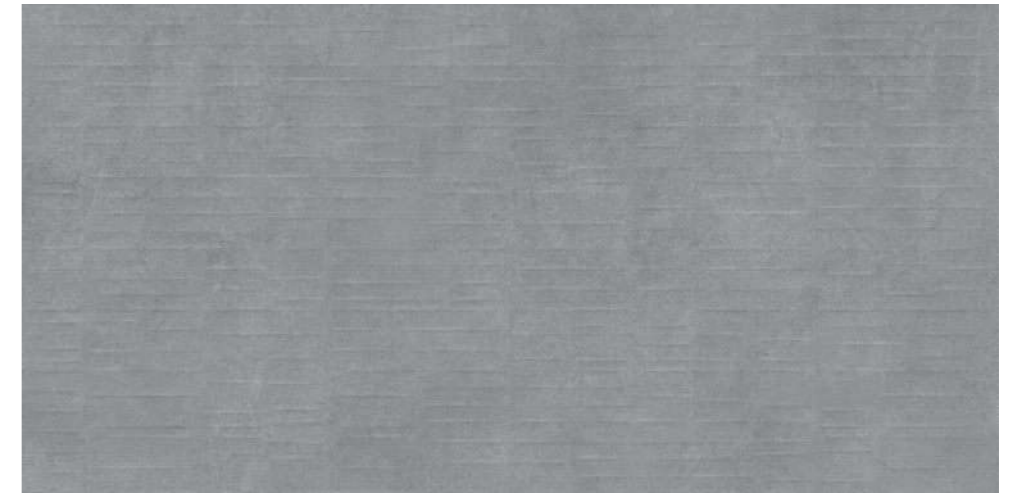
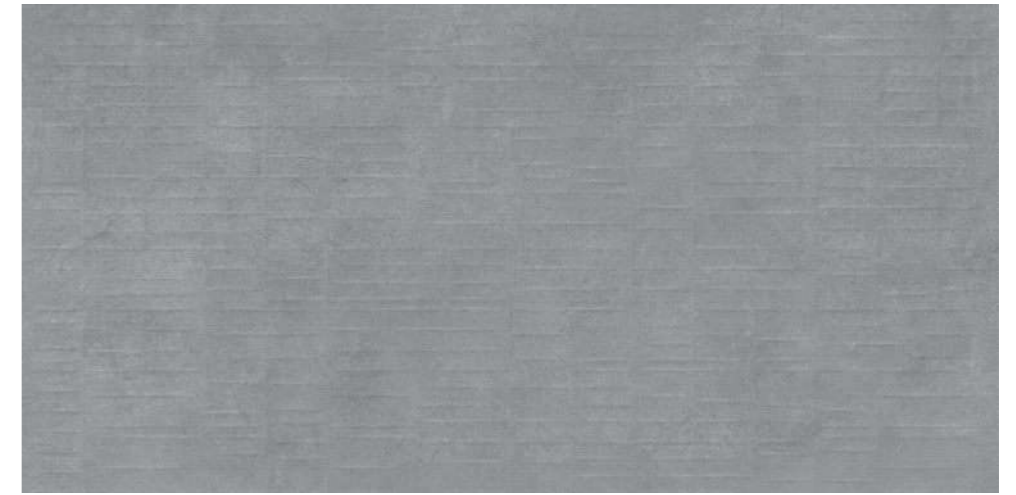
800x1600mm | Carving + Punch Surface | 04 Random

# cassero pewter



**STONECRAFT**  
collection

Touch for Virtual  
**360°**



Deco cassero pewter





**cassero  
anthracite**



800x1600mm | Carving + Punch Surface | 04 Random

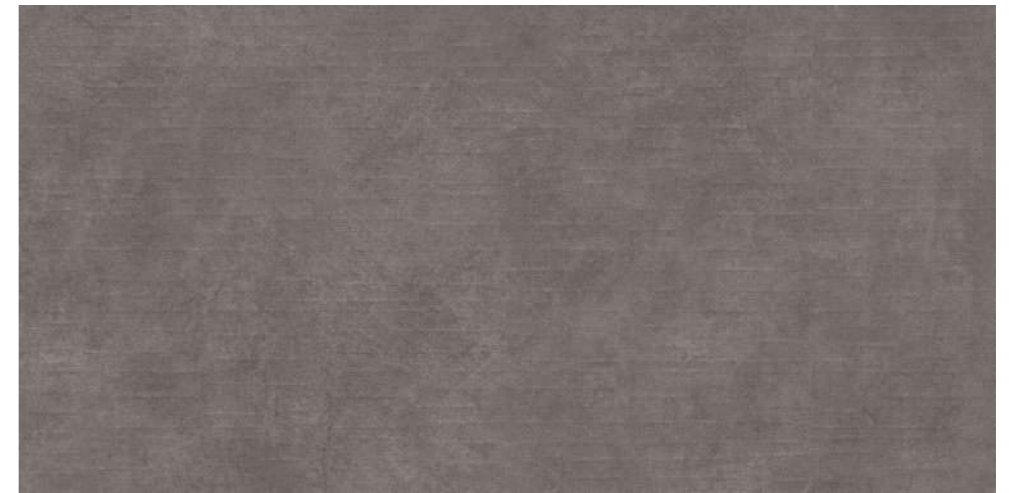
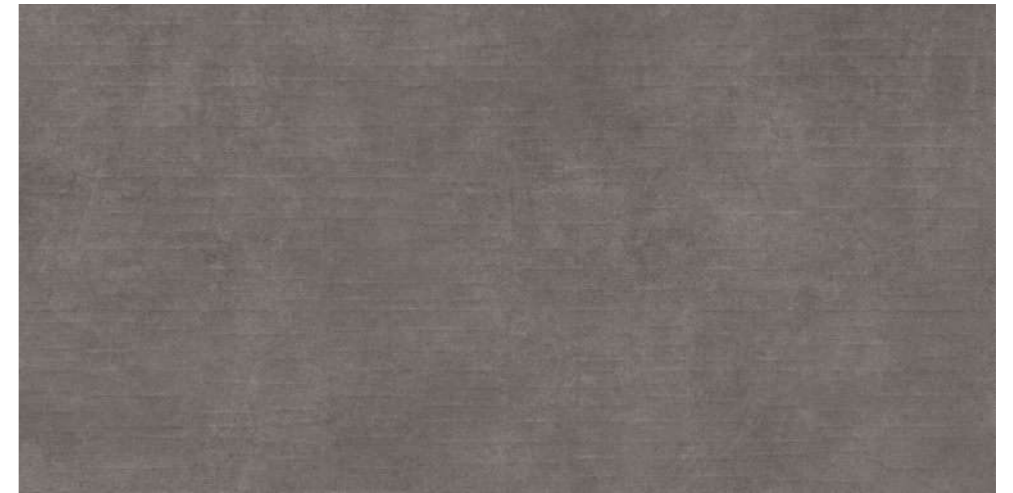
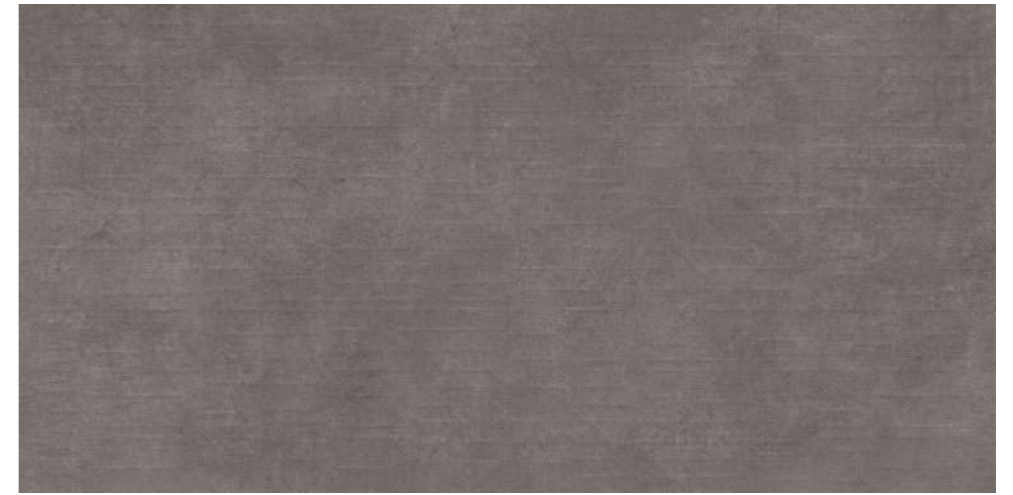
# cassero anthracite



**STONECRAFT**  
collection

Touch for Virtual  
**360°**

Deco cassero anthracite







## TECHNICAL SPECIFICATION



## PACKING DETAILS

| SR. NO | PRODUCT         | NOMINAL SIZE | THICKNESS | TILES PER BOX | WEIGHT | COVERAGE AREA |
|--------|-----------------|--------------|-----------|---------------|--------|---------------|
| 1      | VITRIFIED TILES | 800x1600mm   | 9mm       | 2             | 52 kg  | 2.56 Sq. Mtr. |

| CHARACTERISTIC                           | STANDARD AS PER ISO-13006/EN 14411 GROUP BIa | MEAN VALUE OF POLISHED GVT | MEAN VALUE OF RUSTIC GVT    | TEST METHOD  |
|--|--|----------------------------|-----------------------------|--------------|
| <b>REGULATORY PROPERTIES</b>             |  |                            |                             |              |
| Deviation in length & width              | ±0.5 %                                       | ±0.1 %                     | ±0.1 %                      | ISO-10545-2  |
| Deviation in thickness                   | ±5.0 %                                       | ±4.0 %                     | ±4.0 %                      | ISO-10545-2  |
| Straightness in side                     | ±0.5 %                                       | ±0.1 %                     | ±0.1 %                      | ISO-10545-2  |
| Rectangularity                           | ±0.5 %                                       | ±0.1 %                     | ±0.1 %                      | ISO-10545-2  |
| Surface flatness                         | ±0.5 %                                       | ±0.2 %                     | ±0.2 %                      | ISO-10545-2  |
| Color difference                         | Unaltered                                    | No change                  | No change                   | ISO-10545-16 |
| Glossiness                               | As per mfg                                   | Min 90%                    | Min 4%                      | GLOSSOMETER  |
| <b>STRUCTURAL PROPERTIES</b>             |  |                            |                             |              |
| Water absorption                         | < 0.50 %                                     | < 0.20 %                   | < 0.20 %                    | ISO-10545-3  |
| Apparent density                         | > 2.0 g/cc                                   | >2.10 g/cc                 | >2.10 g/cc                  | DIN 51082    |
| <b>MASSIVE MECHANICAL PROPERTIES</b>     |  |                            |                             |              |
| Modulus of rupture                       | Min. 35 N/mm <sup>2</sup>                    | Min. 40 N/mm <sup>2</sup>  | Min. 40 N/mm <sup>2</sup>   | ISO-10545-4  |
| Breaking strength                        | Min. 1300 N                                  | Min. 2000 N                | Min. 2000 N                 | ISO-10545-4  |
| Impact resistance                        | As per mfg.                                  | Min. 0.55                  | Min. 0.55                   | ISO-10545-5  |
| <b>SURFACE MECHANICAL PROPERTIES</b>     |  |                            |                             |              |
| Surface abrasion resistance              | As per mfg.                                  | Min. Class-3               | Min. Class-4                | ISO-10545-7  |
| MOH's hardness                           | As per mfg.                                  | Min. 4                     | Min. 5                      | EN 101       |
| <b>THERMO HYGROMETRIC PROPERTIES</b>     |  |                            |                             |              |
| Frost resistance                         | No damage                                    | No damage                  | No damage                   | ISO-10545-12 |
| Thermal shock resistance                 | No damage                                    | No damage                  | No damage                   | ISO-10545-9  |
| Moisture expansion                       | Nil  | Nil                        | Nil                         | ISO-10545-10 |
| Thermal expansion (COE)                  | Max. 9.0 x 10 <sup>-6</sup>                  | Max. 6.5x10 <sup>-6</sup>  | Max. 6.5 x 10 <sup>-6</sup> | ISO-10545-8  |
| Crazing resistance                       | As per mfg.                                  | Min. 10 Cycle              | Min. 10 Cycle               | ISO-10545-11 |
| <b>CHEMICAL PROPERTIES</b>               |  |                            |                             |              |
| Chemical resistance                      | No damage                                    | No damage                  | No damage                   | ISO-10545-13 |
| Stain resistance                         | Resistant                                    | Resistant                  | Resistant                   | ISO-10545-14 |
| <b>SAFETY PROPERTIES</b>                 |  |                            |                             |              |
| Slip resistance                          | As per mfg.                                  | >0.40                      | >0.40                       | ISO-10545-17 |
| Fire resistance                          | As per mfg.                                  | Fire proof                 | Fire proof                  | N. A.        |
| Lead & Cadmium given off by glazed tiles | As per mfg.                                  | Does not yield Pb & Cd     | Does not yield Pb & Cd      | ISO-10545-15 |



**BOFFO**®

— ADORABLE SURFACES —

**BOFFO GRANITO L.L.P.**

At Dhuva, Survey No 170/2, Nr. Big Tiles, NH 8A, Wankaner,  
Morbi - 363621, Gujarat-india.

marketing@boffogranito.com | export@boffogranito.com

**CALL US**

**+91 98259 23401, +91 91060 39994**